

# STEELSITES™ RB SERIES



RB-28

## Furniture-Quality Finish Joints

The beautiful RB-28 is one of our most popular products. Carefully fabricated and expertly hand finished, the RB-28 combines elegance and comfort with strength and durability.

### RB-28 Bench

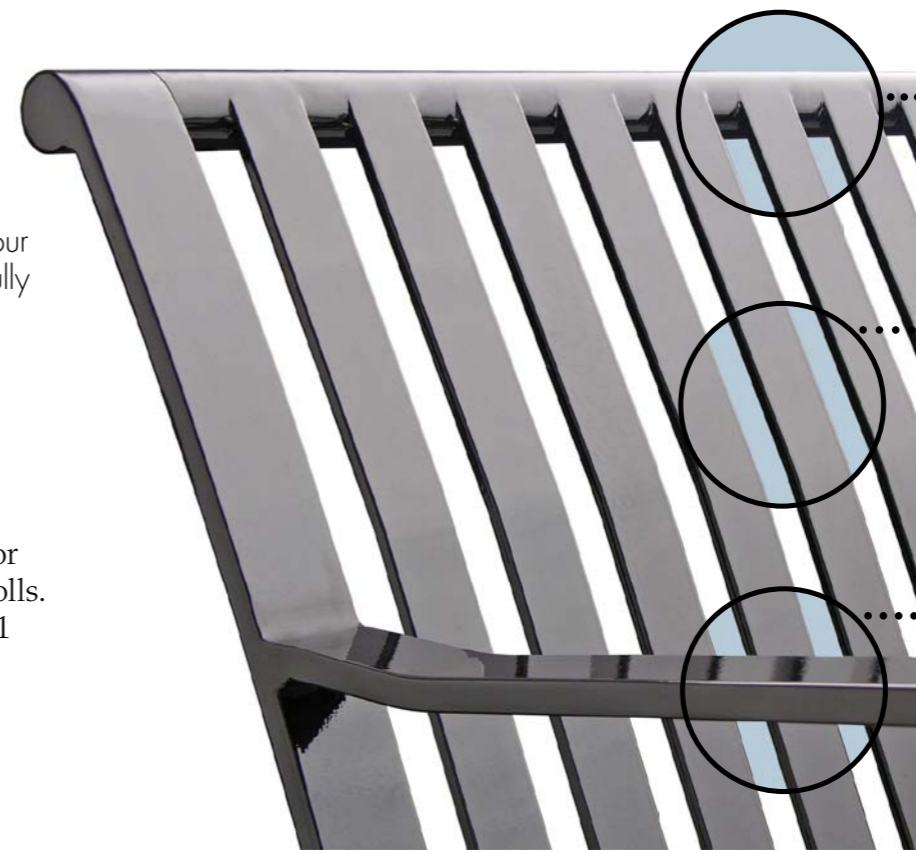
Length: 4, 6 or 8 ft. (1.2, 1.8 or 2.4 meters). Vertical steel scrolls. Arm frames: ½ x 2 in. (13 x 51 mm) solid steel bar. Polished welds. Surface mount tabs. Options: Faux wood finish. Intermediate armrests.

### RB-12 Backless Bench

Length: 4, 6 or 8 ft. (1.2, 1.8 or 2.4 meters). Steel scrolls. Surface mount tabs. 8 ft. (2.4 meter) length includes center leg. Option: Intermediate armrests.



RB-28 with **OPTIONAL** intermediate armrest.



..... Every weld is carefully polished.

..... ¼ x 1-½ inch (6.4 x 38 mm) vertical solid steel bar.

..... Arm Frames: ½ x 2 inch (13 x 51 mm) solid steel bar for comfort and support.

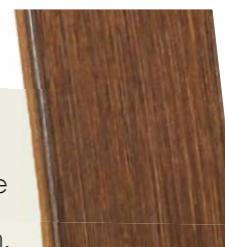


RB-12 backless benches are perfect companions for the RB-28.




## Faux Wood Finish


The RB-28 is now available with an **OPTIONAL** faux wood finish. This new matte finish mimics the depth of natural wood grain.






 **1 FRANCE**




 **2 SCOTLAND**



 **4 USA**



 **5 JAPAN**



 **3 USA**



 **6 SINGAPORE**



 **7 USA**

## RB-28 Steelsites™ RB Series Benches around the world:

- 1** Courbevoie (Suburb of Paris) at La Defense, France
- 2** Haddington, Scotland
- 3** City Dock at U.S. Naval Academy, Annapolis, Maryland USA
- 4** Restaurant Waiting Area, Bethesda, Maryland USA
- 5** Yokohama Bayside Marina Shopping Center, Yokohama, Japan
- 6** Whampoa Drive Housing Estate, Singapore
- 7** Court Square Park, Memphis, Tennessee USA

*... and many more.*

<http://www.victorstanley.com/installations>

# STEELSITES™ RB SERIES

*Graceful, gentle curves combined with strong, straight lines ...*

a dramatic and elegant design.

The RMFC-24 bench exudes beauty, strength and comfort. It will enhance the appearance of any site in which it is installed.

RMFC-24 ▶



▲ The RBF-28 features smooth lateral lines with welded horizontal steel slats.



**New!**  
RMS-24



**New!** RM-12 backless bench.



RBF-12

## RB-36 Tapered Litter Receptacle

US Patent D417,053. Capacity: 36 gallons (136 liters). Standard tapered formed lid. Black plastic liner. Leveling feet. Bottom recessed pedestal.

Options: Dome lid (with or without ashtray). Convex lid (with or without self-closing door). Rain bonnet lid (with or without ashtray). Galvanized steel liner (with or without powder coat). Custom decals and plaques.

## RB-24 Tapered Litter Receptacle

Capacity: 24 gallons (90 liters) available (not shown).

## RB-45 Tapered Litter Receptacle

Capacity: 45 gallons (170 liters) available (not shown).

## RBF-28 Bench

Length: 4, 6 or 8 ft. (1.2, 1.8 or 2.4 meters). Horizontal steel slats. Surface mount tabs. Option: Intermediate armrest.

## RBF-12 Backless Bench

Length: 4, 6 or 8 ft. (1.2, 1.8 or 2.4 meters). Steel slats. Surface mount tabs. 8 ft. (2.4 meter) length includes center leg.

## RMFC-24 Bench

## RMS-24 Bench

## RM-12 Backless Bench

Length: 4, 6 or 8 ft. (1.2, 1.8 or 2.4 meters). Steel slats. Flat armrests. Surface mount tabs.

Our patented RB-36 tapered receptacle features a top horizontal steel band ... ideal for decal placement.



Drawings are close representations of actual lids.